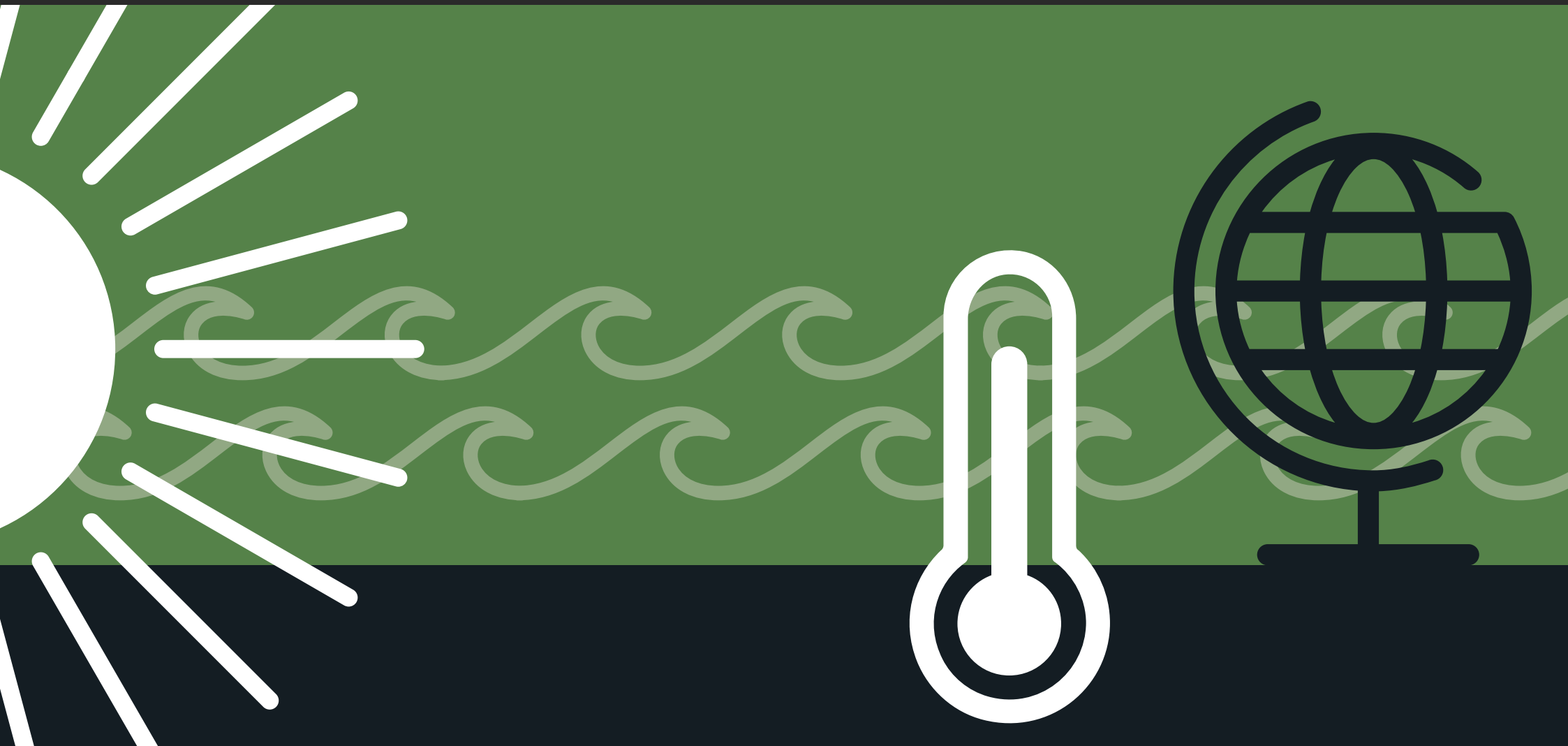


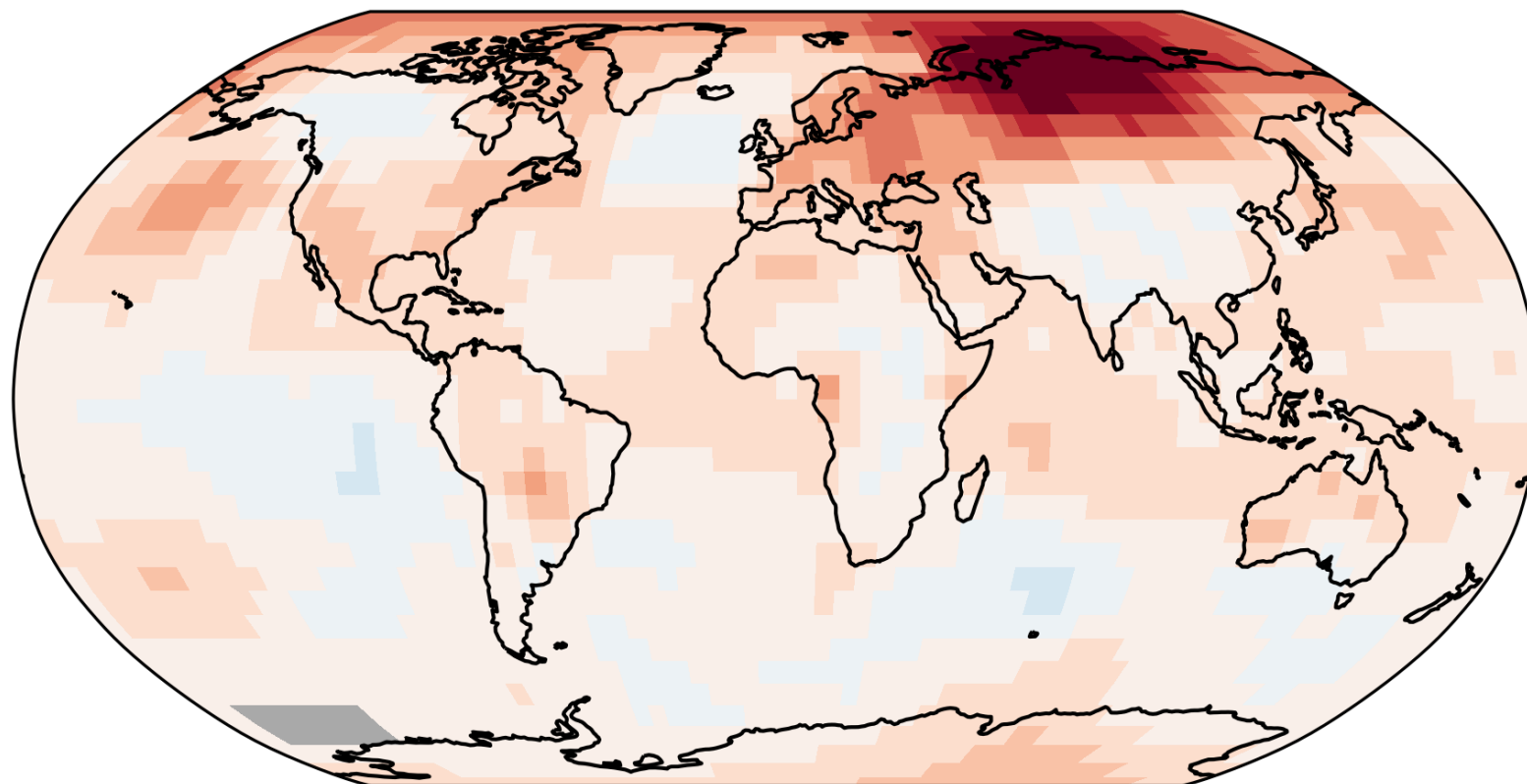


Exploring climate change data



2020 Temperature Anomalies

based on the HadCRUT5 data set

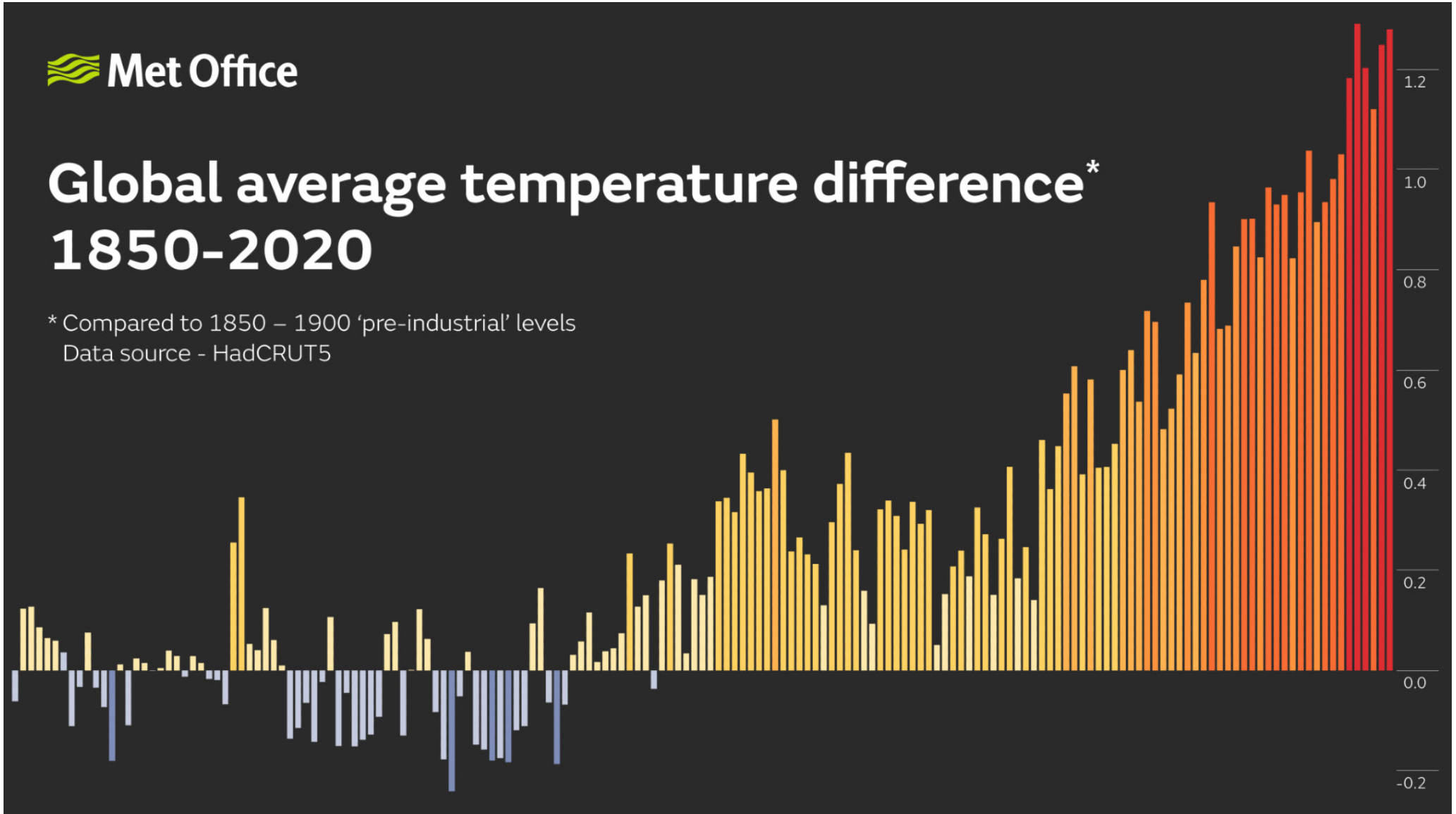


Temperature difference from 1981-2010 average (°C)

© Crown Copyright. Source: Met Office

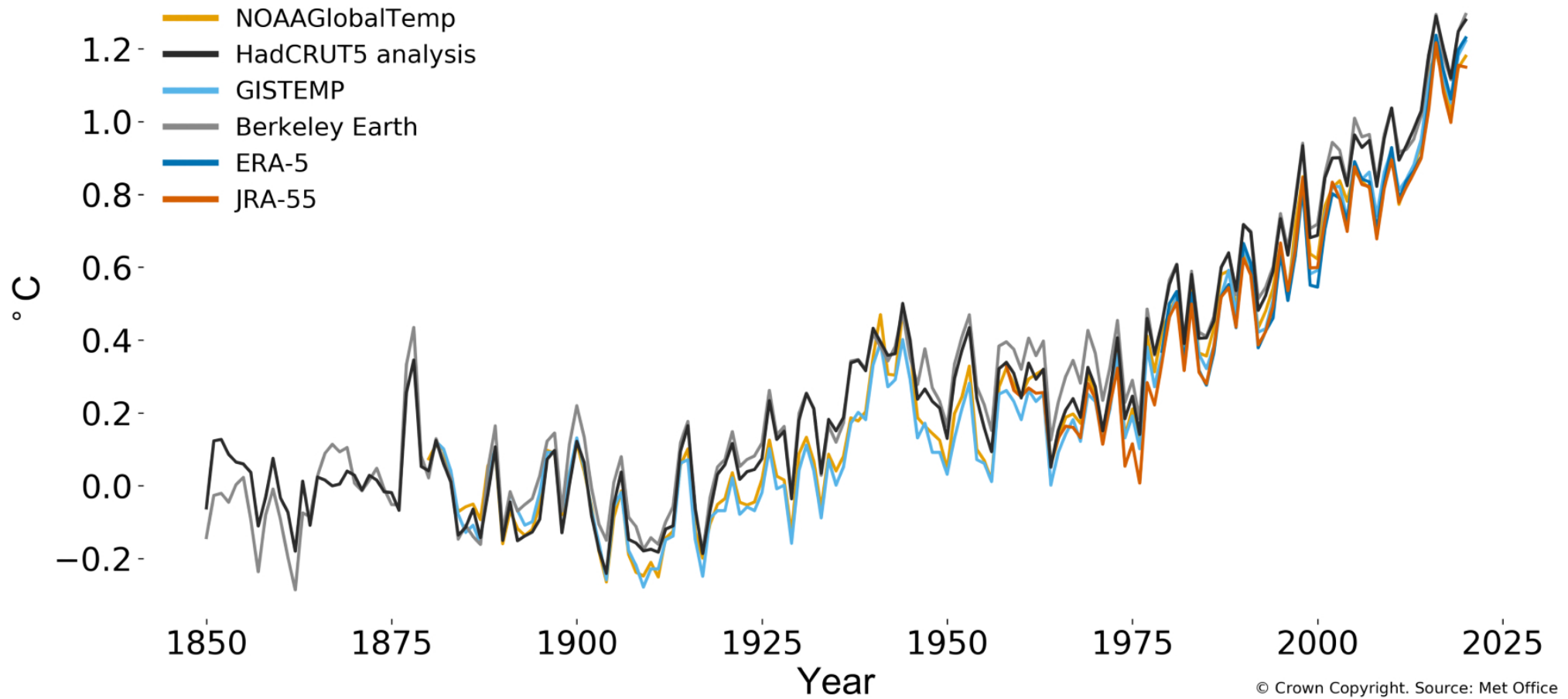
Global average temperature difference* 1850-2020

* Compared to 1850 – 1900 'pre-industrial' levels
Data source - HadCRUT5



 Met Office

Global mean temperature difference from 1850-1900 (° C)



© Crown Copyright. Source: Met Office

Questions

- What does the data represent?
- If you just look at the map for 2020, do they think it would be important to look at maps for other years too?
- Can you think about what the data you have looked at means? You could think about what it means for the globe, for animals and plants, for people.
- Why is it important to make measurements?

Questions

- Do you think it's important to have global surface temperature measurements from different research centres?
- How do you think the temperatures will evolve in the future? Will they rise, stay the same or go up and down?
- What other things might scientists need to measure to help us understand climate change?

Find out more at
www.metoffice.gov.uk/schools

